



Update from the Consortium of Lancashire & Cumbria LMCs

Tuesday 11th March



Weekly Brieflet brought to you by

Lancashire & Cumbria Consortium of Local Medical Committees

This Brieflet includes the following topics:

- General Practice Alert State (GPAS)
- L&SC ICB LES Review
- Smoking Cessation Services - L&SC ICB Area
- Letter to schools Regarding Requests for Medical Evidence
- General Practice Appointment Infographics - January 2025
- National Diabetes Prevention Programme (NDPP) - Lancashire & South Cumbria ICB only
- LMC Training Events 2025
- Help us grow our audience



General Practice Alert State (GPAS)

You can see the latest SitRep results below. Results can also be found [on our website](#).

The data we do not receive prevents us from providing a robust picture of system partners and hinders our efforts to push for more support on your behalf.

We really appreciate you taking the time to help us help you.

[Please let us know](#) if you are a Practice Manager and do not receive the GPAS input emails.

If someone at your practice needs to be added to the distribution list please email enquiries@nwlmc.org. Submission links are sent out every Tuesday and Wednesday.

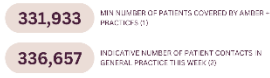


GENERAL PRACTICE ALERT STATE SITREP | 07.03.2025

LANCASHIRE & CUMBRIA DATA

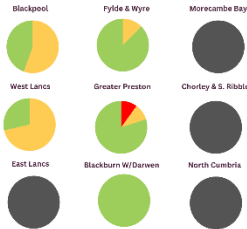


IMPORTANT FIGURES



LOCALITY DATA

LOCALITY	GPAS STATUS	OPEL STATUS	CLINICAL ACTIVITY	RETURN RATES
Blackpool	3	26/1000	56%	
Fylde & Wyre	1	35/1000	44%	
Mossburn Bay	Insufficient responses			
West Lancs	3	38/1000	47%	
Greater Preston	1	41/1000	45%	
Chorley & S. Ribble	Insufficient responses			
East Lancs	Insufficient responses			
Blackburn W/Darwen	1	25/1000	43%	
North Cumbria	Insufficient responses			



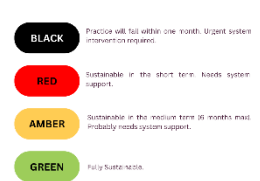
A SELECTION OF THIS WEEK'S PRACTICE COMMENTS

From 26 Nov, we have ANP's at 10 AM daily.
 1 sample on line.
 Start stopped due to staff sickness, usual issue with 3 new DM'S NHS email system on Mondays.

GPAS CHANGE SINCE LAST SITREP

LOCALITY	Last SITREP	This Week	Trend	Note
Blackpool	3	3	→	
Fylde & Wyre	1	1	↕	OPEL 2 TO OPEL 1
Mossburn Bay	0	0	→	
West Lancs	3	3	→	
Greater Preston	1	1	→	
Chorley & S. Ribble	0	0	→	
Fylde & Wyre	0	0	→	
Blackburn W/Darwen	1	1	→	
North Cumbria	0	0	→	Insufficient responses

A QUICK GUIDE TO THE GPAS STATES



LMC NOTE:

Please continue to share your data with us so that we can ensure the system is aware of any capacity and demand concerns pertaining to General Practices.

© 2025 Lancashire and Cumbria Local Medical Council. All rights reserved. For more information, please contact us at info@lancashireandcumbriamelic.org.uk

Please let us know if you have any questions/ issues

L&SC ICB LES Review

We are continuing to engage with L&SC ICB regarding their proposed LES specifications and timeline for implementation.

Back in January we suggested a separately funded LES arrangement would be required for domiciliary phlebotomy if this workload was to fall to practices. We believed we were reassured that this work was within contract for community providers. The LMCs felt funding proposed in the main Phlebotomy specification was unlikely to adequately resource practices, some of which have relatively high numbers of housebound patients with health problems that necessitate bloods to be taken.

It has come to light that wording in the specification shared to practices recently would still suggest that any house bound patient or resident in a care home who is not part of DN caseload becomes the responsibility of General Practice - we have highlighted the LMCs clear stance on this issue to the **ICB who have confirmed the error in their specification will be corrected.**

Smoking Cessation Services - L&SC ICB Area

We have recently escalated concerns about patients being directed to their GP for Varenicline prescriptions rather than these being issued by Smoking Cessation Services. We have made it very clear to commissioning colleagues that the current pathway/working practice is inappropriate and that if GPs are expected to be involved, practices need to be appropriately resourced via a LIS/LES arrangement.

Options for improving the pathway are being actively considered but we wanted to remind you that at present these requests are **unfunded** and you are under no obligation to engage.

Letter to schools Regarding Requests for Medical Evidence

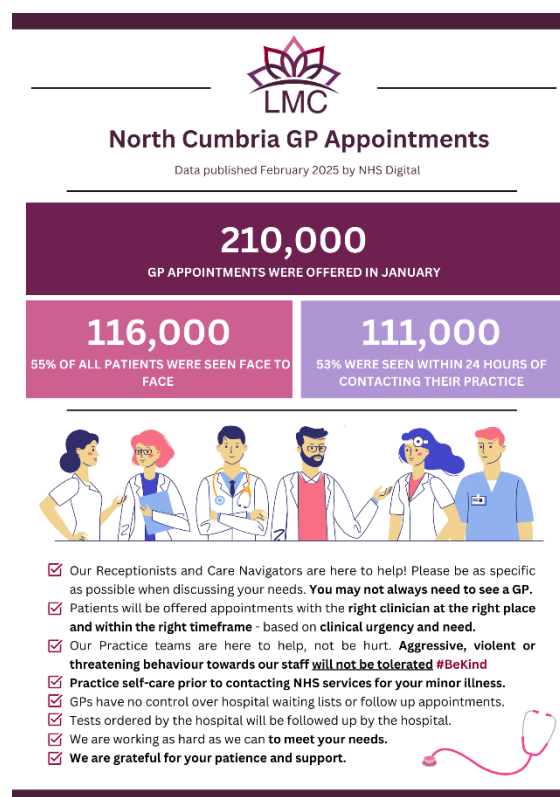
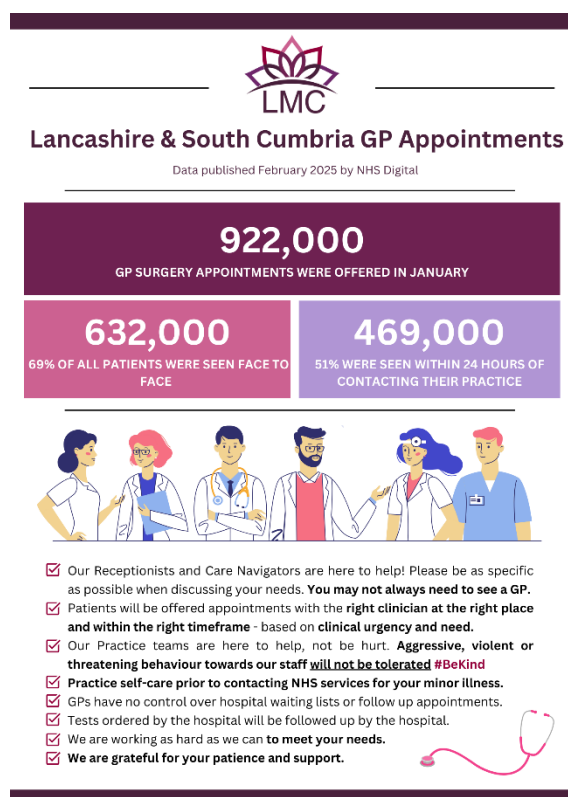
The LMC has recently worked with Lancashire County Council to update local guidance to schools about medical evidence relating to pupil absences. The [letter](#) has been added to the guidance for [managing inappropriate workload](#) on our website and aims to correct misconceptions on the role of GPs in issuing sickness certification for pupils. It reminds Headteachers not to be rigid about the forms of evidence requested, that evidence of consultations can be easily obtained via online access without the need for practice involvement and that that GPs should not be asked for appointments for pupils that do not need to see the doctor.

General Practice Appointment Infographics - January 2025

We have created infographics for Practices to use in your waiting rooms, websites and social media. These infographics raise patient awareness on the current state of General Practice and how practices are operating.

Some example infographics can be seen below. Feel free to pick and choose the images that are suitable for your practices needs [on our website](#).

If you would like the images in a different format [please get in touch.](#)



National Diabetes Prevention Programme (NDPP) - Lancashire & South Cumbria ICB only

Please find overview of programme and further details [here](#) of the NDPP.

LMC Training Events 2025

Please see a list of upcoming training events being hosted by the LMC:

- [Complaints Training](#)
- [Conflict Management](#)

- [CQC Update](#)

To book your place or find out more information, please contact Rebecca.Noblett@nwlmc.org or view [here](#).

Help Us Grow Our Audience

We understand that you are busy and are likely to receive many emails on a daily basis. However it is important for you to receive communications from us because **we can help and support you.**

We know there are many colleagues who do not receive our brieflet, so please help us by sharing this with your team and letting us know to add them to our distribution lists.

Contact Us



You have received this Brieflet because you are on the distribution list for Lancashire & Cumbria Consortium of Local Medical Committees. Please [let us know](#) if you want to be on the distribution list to receive this Brieflet.

If you no longer wish to receive this Brieflet and/or are retiring, please let us know [here](#).



